

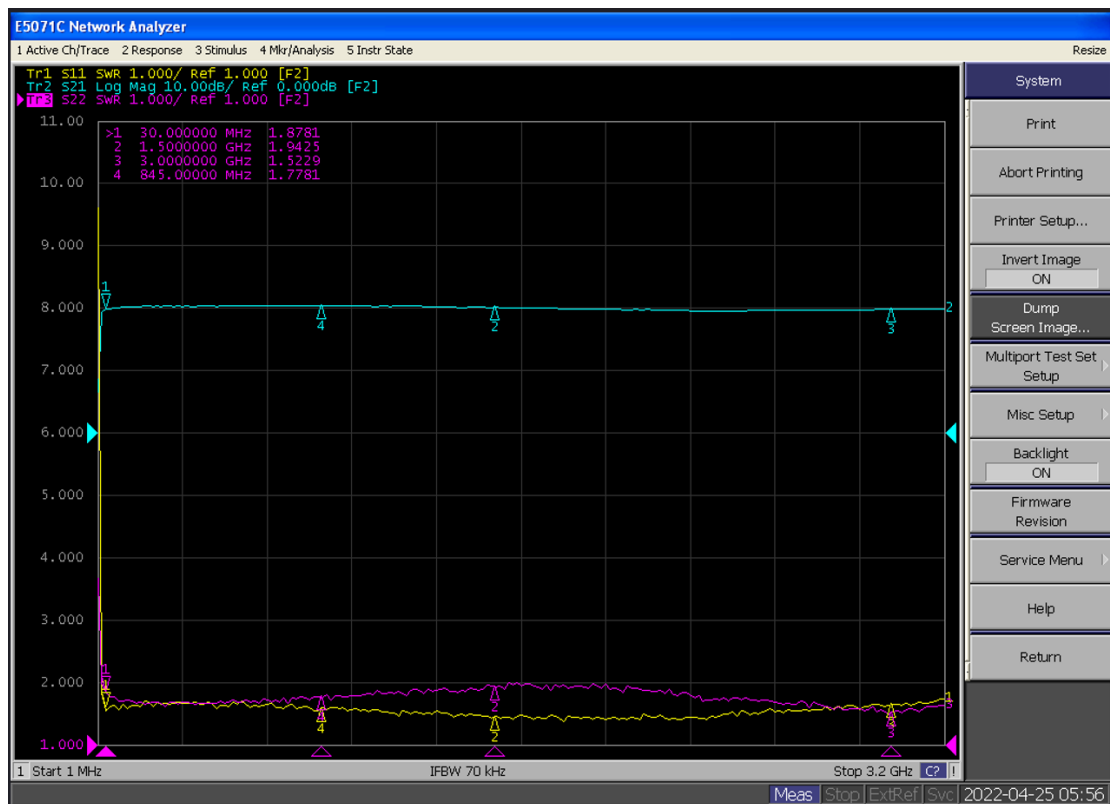
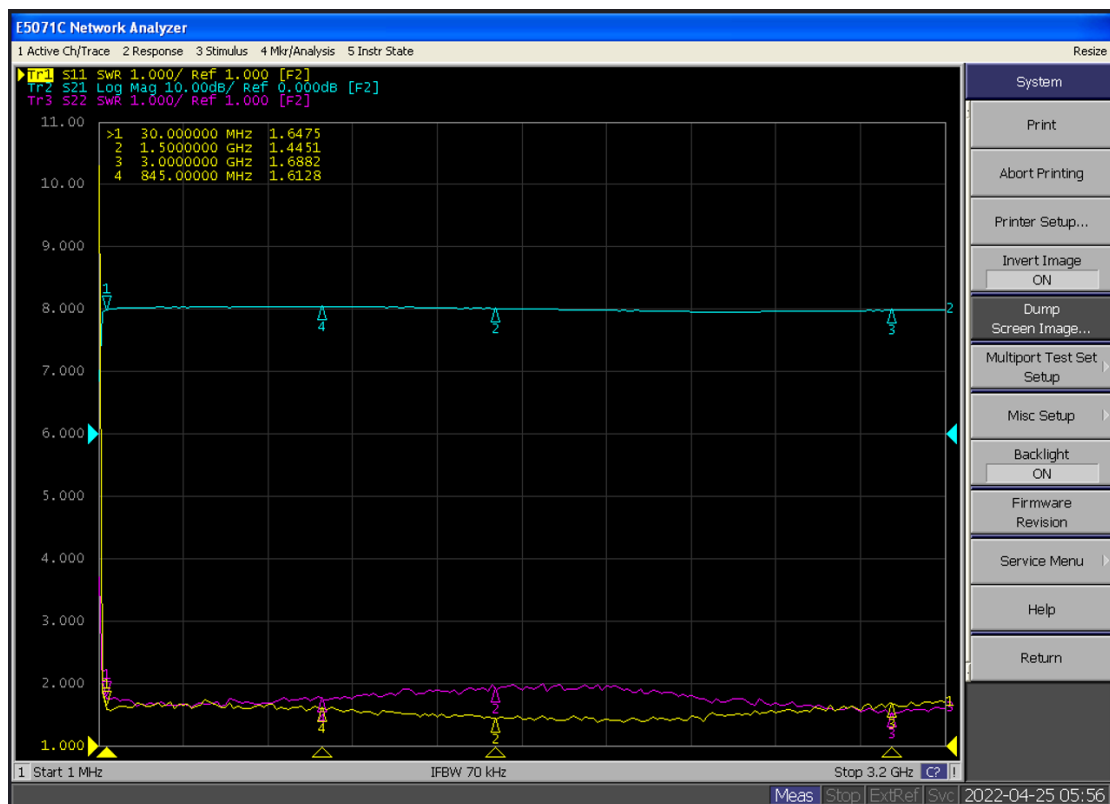
## ZDH1037 30-3000MHz-5V 应用笔记

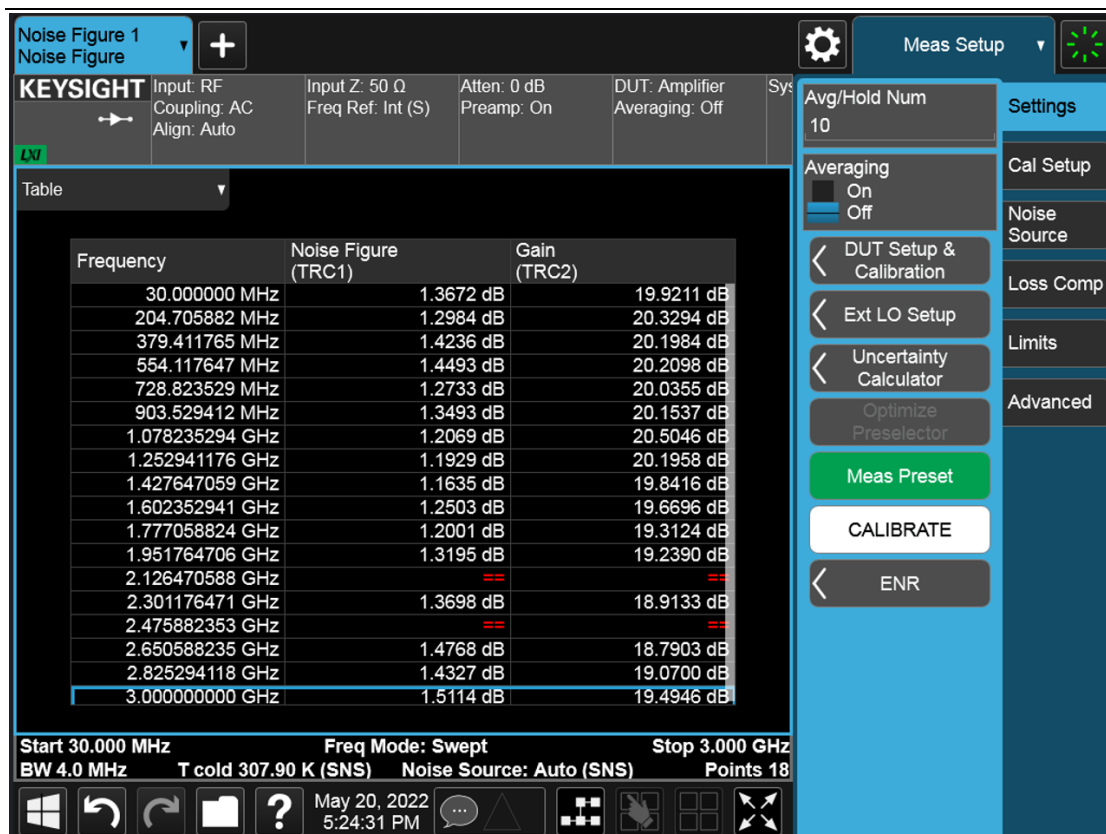
### 一、射频指标

工作频率 (Frq)	MHz	30	1500	3000
增益 (S21)	dB	20.0	20.3	20.0
噪声系数 (NF)	dB	1.36	1.25	1.51
输入驻波 (S11)		1.64	1.44	1.68
输出驻波 (S22)		1.87	1.94	1.52
P1 功率 (Pout)	dBm	17.1	19.2	19.2
输入功率(Pin)	dBm	-2	0	1
OIP3	dBm	32.8	32.7	33.2
工作电压 (VCC)	V	5	5	5
静态电流 (Icq)	mA	60	60	60
P1 工作电流 (Icc)	mA	63	75	68

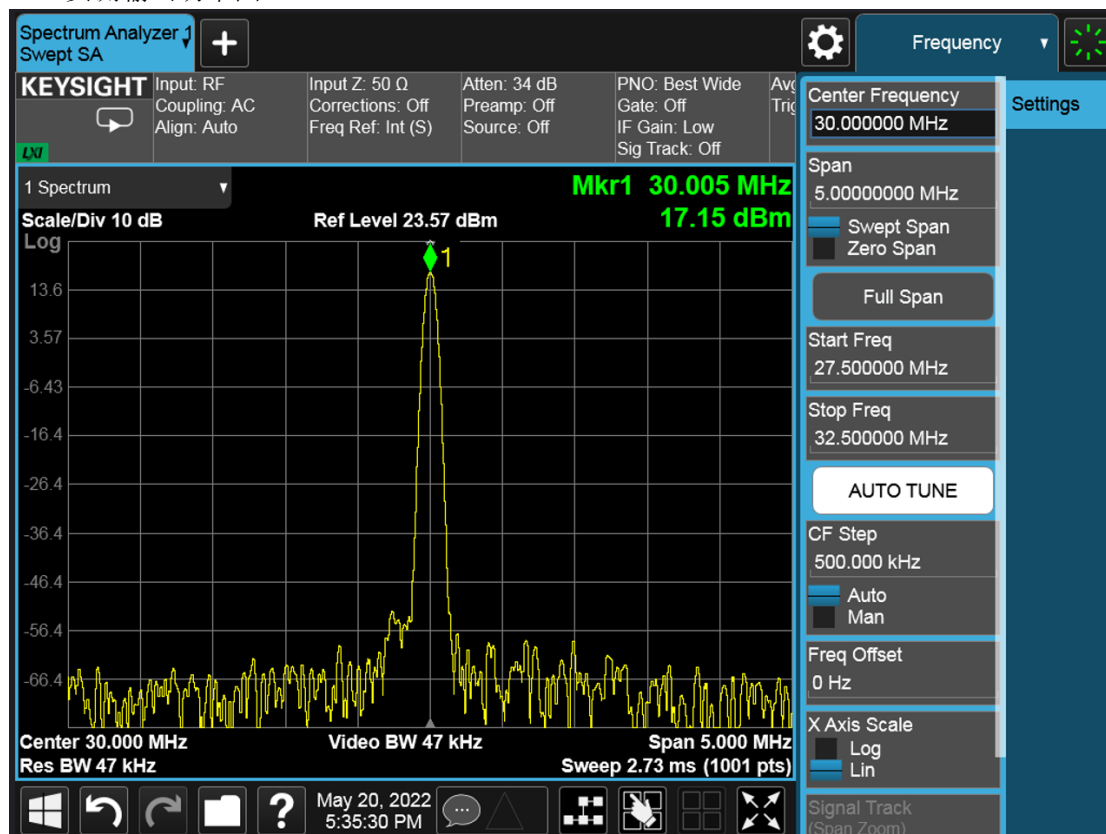
### 二、实测 S 参数图

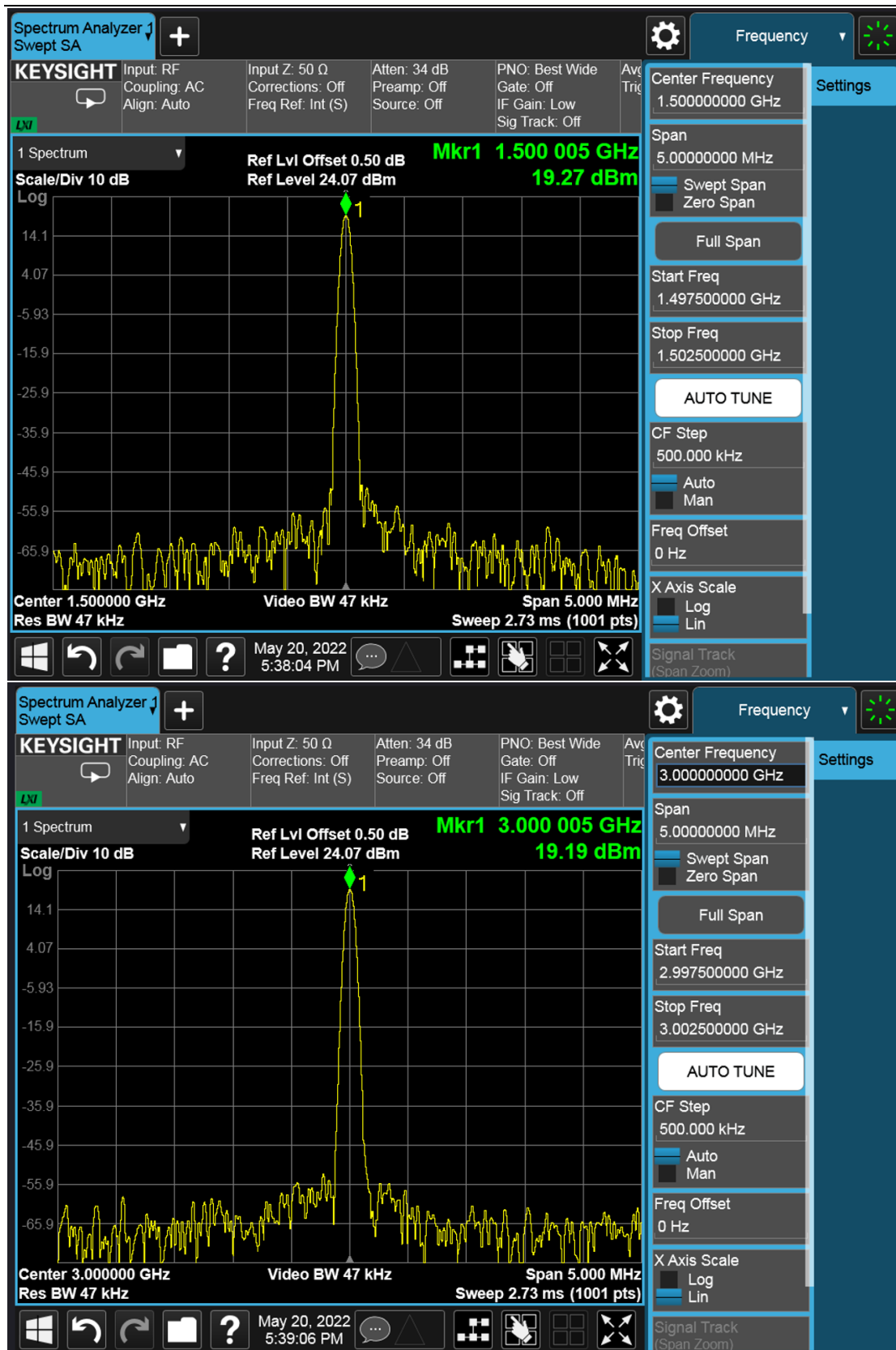


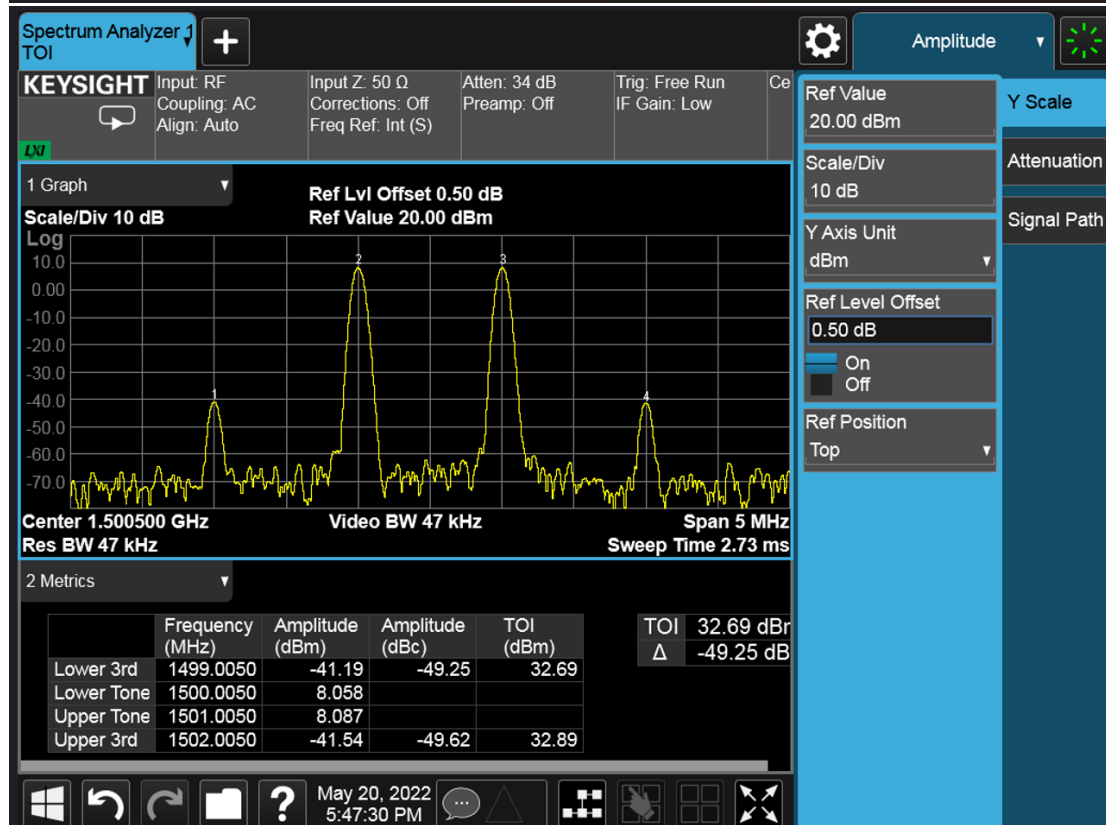
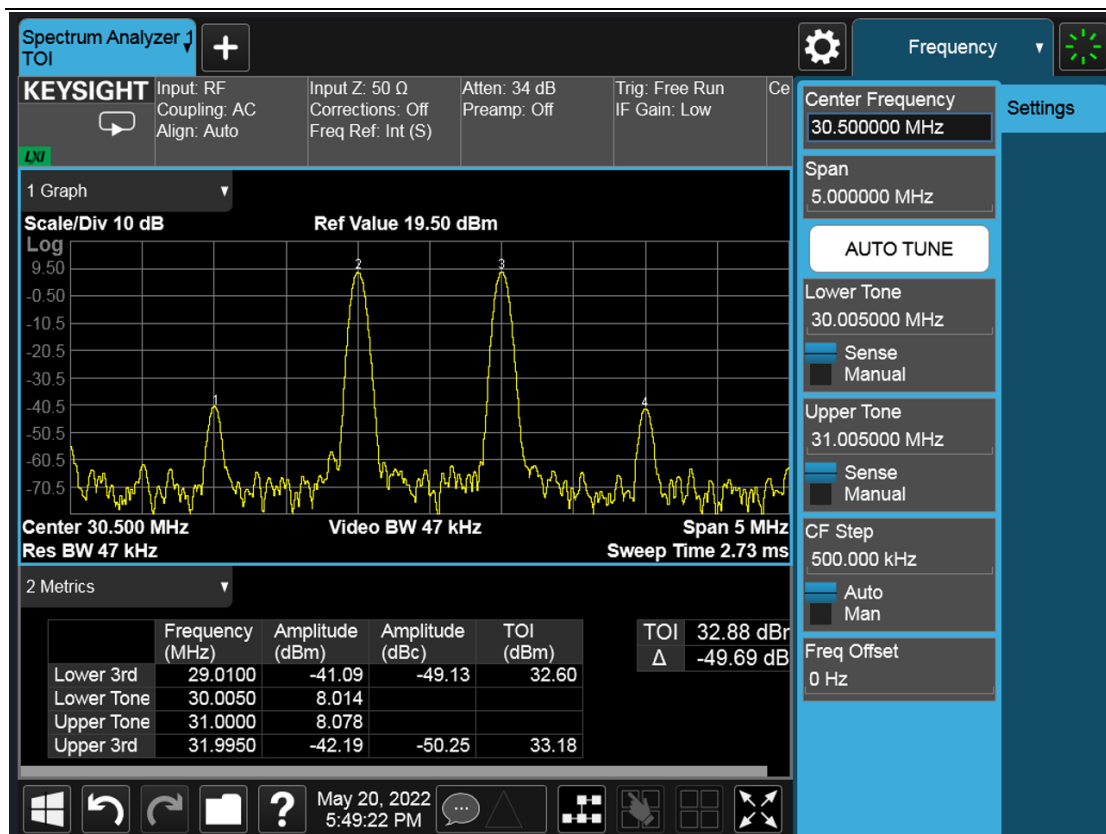


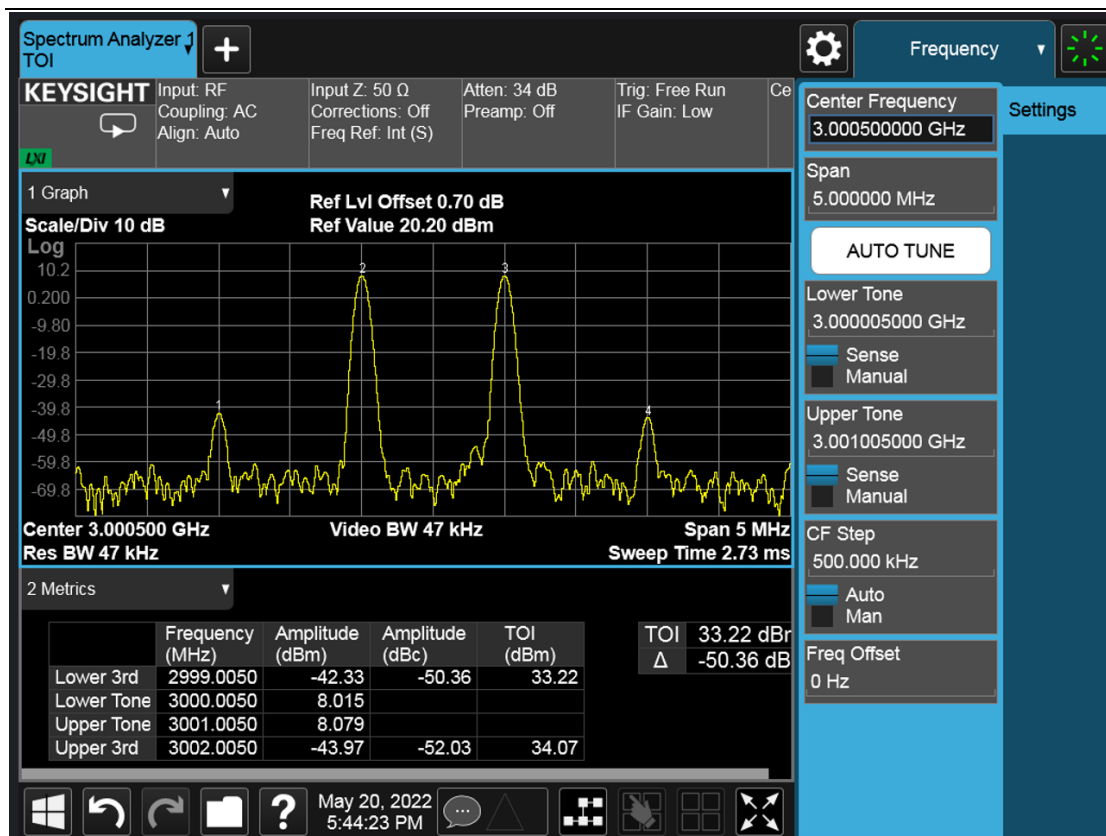


### 三、实测输出功率图

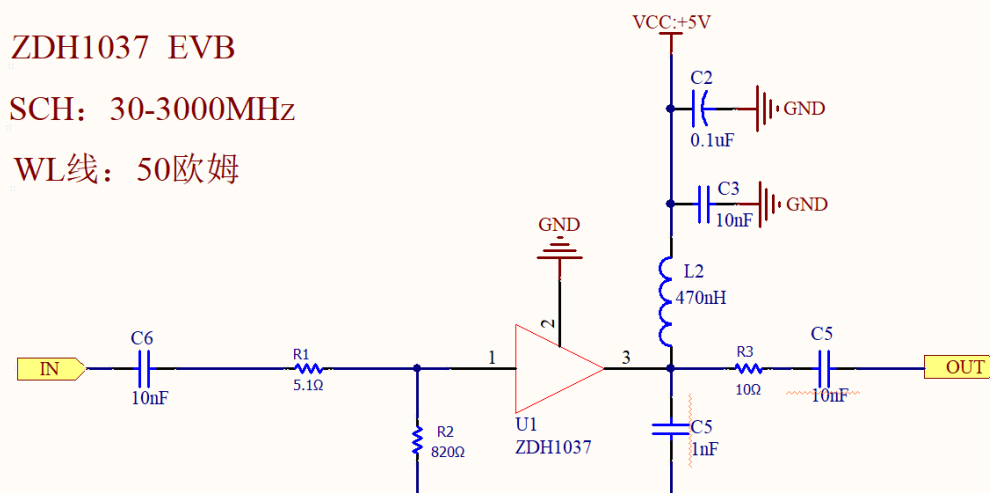




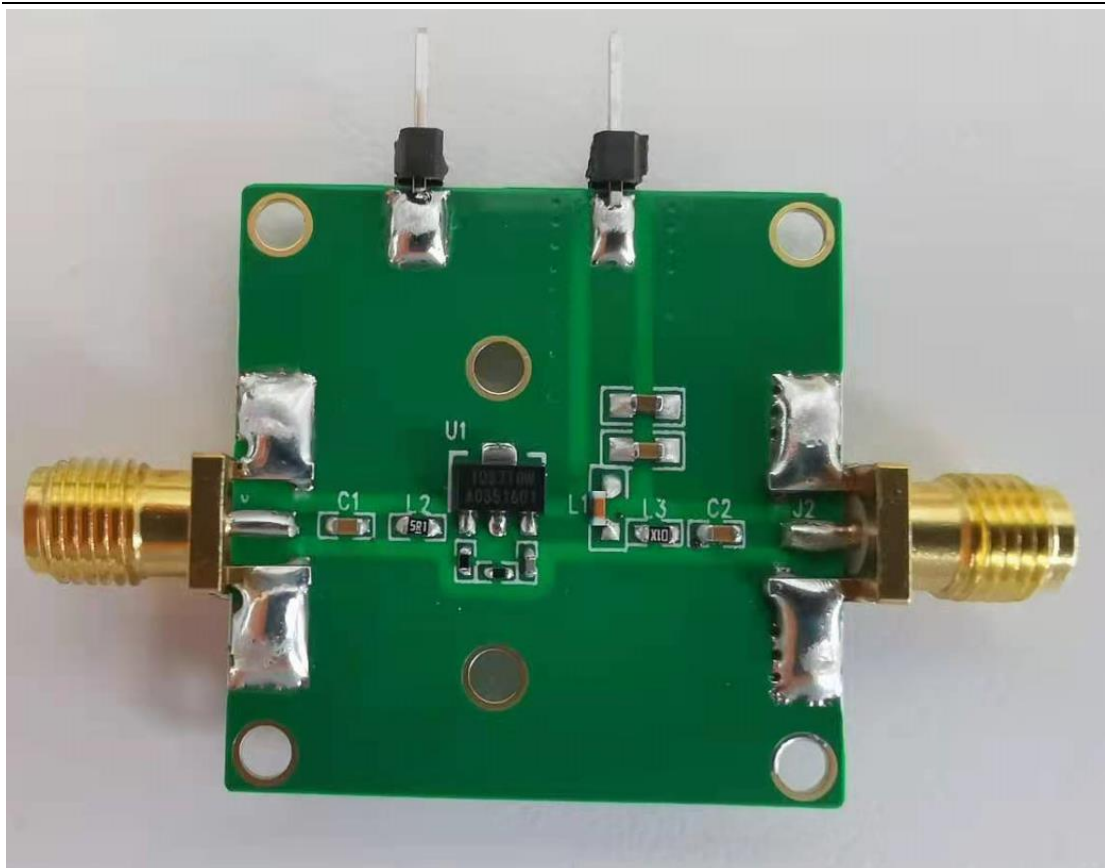




#### 四、评估板原理图



#### 五、评估板实物图



北京中电宏业科技有限公司  
技术部: 陈泽钊  
2022.5.20